



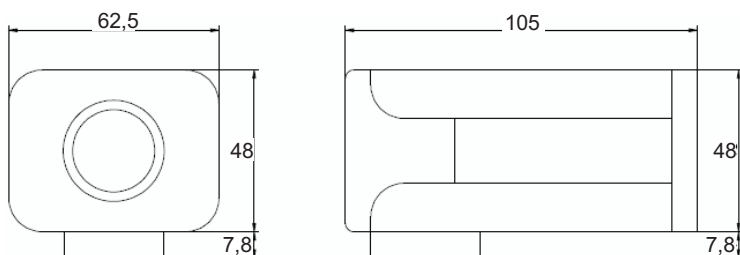
Professional Box Camera Series

BCCHR1

Main Features

- 1/3" Sony Super HAD color CCD
- S/N Ratio >48dB
- Low light: Only 0.8 Lux Minimum
- Strong Auto White Balance ON/OFF Selectable
- Strong Back Light Compensation
- Compatible with C / CS Mount Auto Iris Lens
- Reverse Voltage Input Compatible

Diagram:



Specifications:

Image Sensor	1/3" Sony Super HAD Color CCD
Signal System	NTSC
Scanning Frequency	H:15.734KHz V:60 Hz
Horizontal Resolution	480 TVL
Picture Element	768(H) x 494(V)
Minimum Illumination	0.8 Lux
Electronic Shutter	1/60 ~ 1/100,000 second
S/N Ratio	> 48 dB
Auto Gain Control	On/Off Selection
Backlight Compensation	Preset (On)
Mirror Function	No
Electronic Iris	EE / AI
Video Output	1 Vp-p 75 ohm Composite Video
Supply Voltage	12VDC / 24 VAC (60Hz)
Current used	< 200 mA(12VDC/ < 120mA(24VDC)
Lens	C / CS Mount Compatible
Audio Output	No
Water Proof	Use Outdoor Housing
Body Style	White Metallic BOX
Mounting Bracket	Not Included