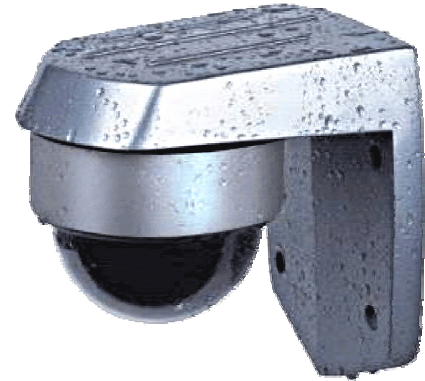




[www.VDXsystems.com](http://www.VDXsystems.com)



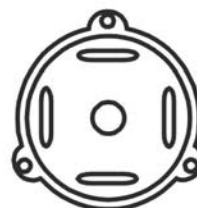
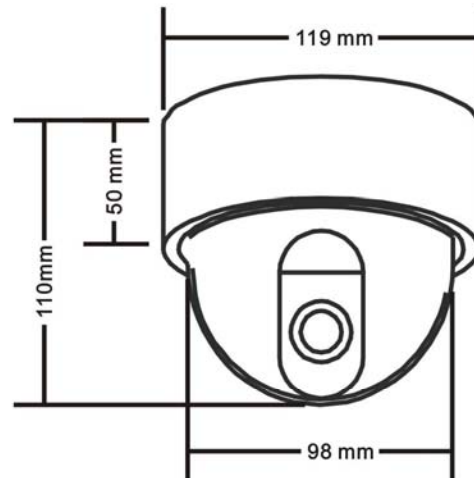
## SPECIFICATIONS

|                               |  |
|-------------------------------|--|
| <b>Model:</b>                 | <b>DCCMRVFVP1</b>                                  |
| <b>Image Sensor:</b>          | <b>1/3" SONY SuperHAD CCD</b>                      |
| <b>Effective Pixels:</b>      | <b>PAL: 500(H)×582(V)<br/>/NTSC: 510(H)×492(V)</b> |
| <b>Sensing Area:</b>          | <b>4.9mm×3.7mm</b>                                 |
| <b>Signal System:</b>         | <b>PAL/NTSC</b>                                    |
| <b>Horizontal Resolution:</b> | <b>420TVL</b>                                      |
| <b>S/N Ratio:</b>             | <b>More than 48dB (AGC OFF)</b>                    |
| <b>Shutter Speed:</b>         | <b>1/50(1/60)- 1/100,000(sec)</b>                  |
| <b>White Balance:</b>         | <b>Automatic White Balance</b>                     |
| <b>Minimum Illumination:</b>  | <b>1 Lux/ F1.2</b>                                 |
| <b>Video Output:</b>          | <b>1.0Vp-p,75Ω</b>                                 |
| <b>Power Requirement:</b>     | <b>DC12V</b>                                       |
| <b>Power Consumption:</b>     | <b>120mA</b>                                       |
| <b>Housing Bracket:</b>       | <b>Vandal-Proof Design</b>                         |
| <b>Lens mount:</b>            | <b>Varifocal 3.5-8mm lens</b>                      |
| <b>Dimension:</b>             | <b>119mm(φ)×110mm(H)</b>                           |
| <b>Weight:</b>                | <b>1200g (with wall mounts)</b>                    |
| <b>Material</b>               | <b>Aluminum</b>                                    |

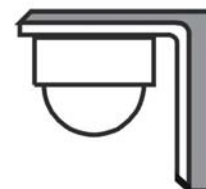
## FEATURES

- 1/3" SONY SuperHAD CCD
- 420TVL, 1 Lux/ F1.2
- Varifocal 3.5-8mm lens
- IP 65 Weatherproof
- Vandal-Proof Design
- Wall mount bracket option

## DIMENSIONS



Ceiling mounts



Wall mounts

\* Specifications are subject to change without prior notice

[Sales@VDXsystems.com](mailto:Sales@VDXsystems.com)  
[Support@VDXsystems.com](mailto:Support@VDXsystems.com)